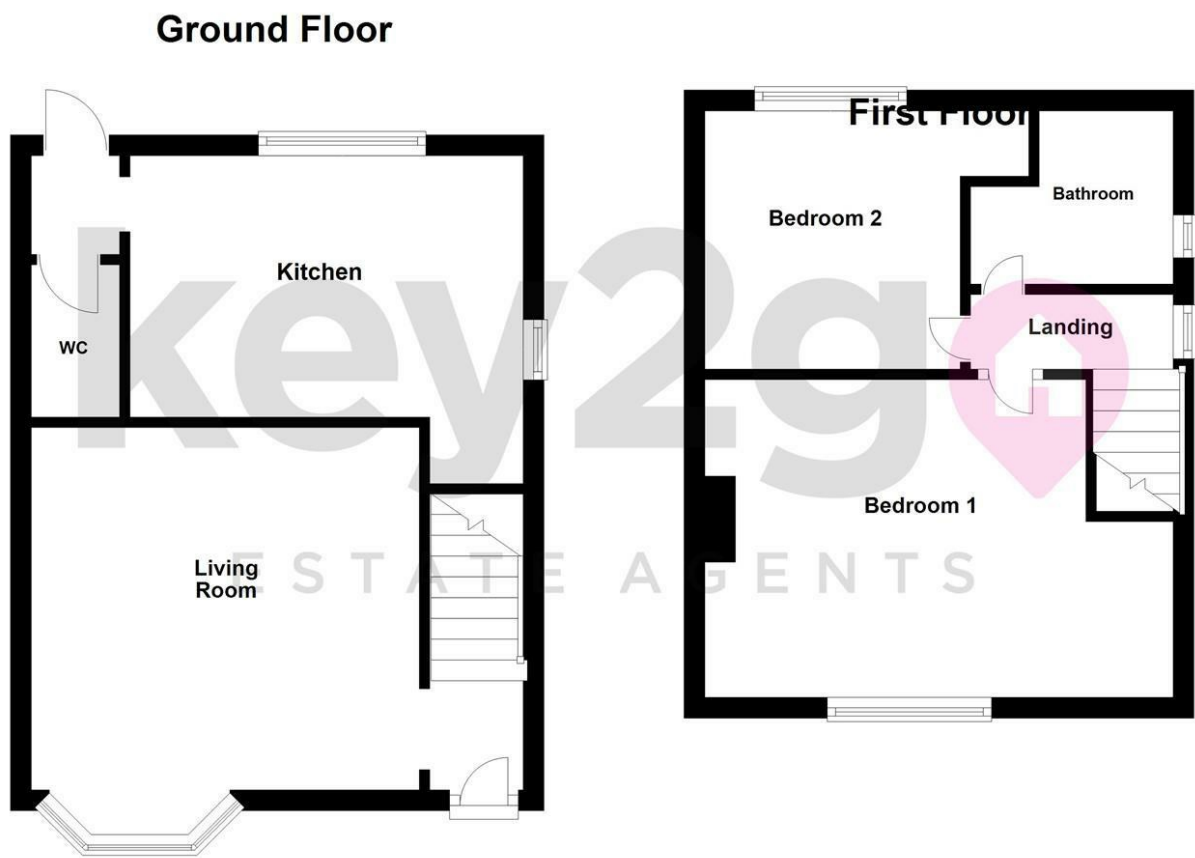


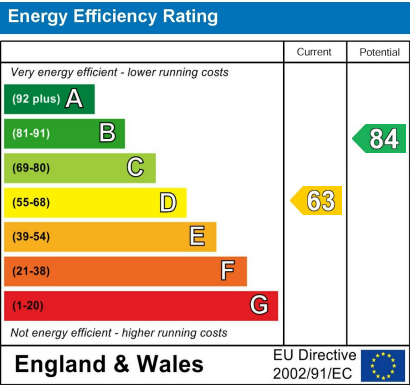
Floorplan



Area Map



Energy Efficiency Graph



Viewing

Please contact our Lettings Team Office on 0114 2478819 if you wish to arrange a viewing appointment for this property or require further information.



26 Woodlands Avenue  
Beighton, Sheffield, S20 1BP

£850 PCM





## 26 Woodlands Avenue

Beighton, Sheffield, S20 1BP

£850 PCM



A beautifully presented 2-bedroom semi-detached house to rent located in Beighton on a quiet cul-de-sac, this charming home features a spacious lounge with a bay window, a modern kitchen with ample wall and base units, a convenient downstairs W/C, two well-proportioned bedrooms, and a stylish bathroom, along with a private enclosed low-maintenance rear garden, a large detached garage, and off-road parking for multiple cars, making it the perfect choice for couples or families seeking comfort and convenience!

